

VERMONT HOUSING & CONSERVATION BOARD

Presented by:

Trey Martin

Director of Conservation & Rural
Community Development

Pollaidh Major

Director of Policy & Special Projects



Bread and Butter Farm



VHCB Staff and AmeriCorps Members



Vermont Housing &



Conservation Board

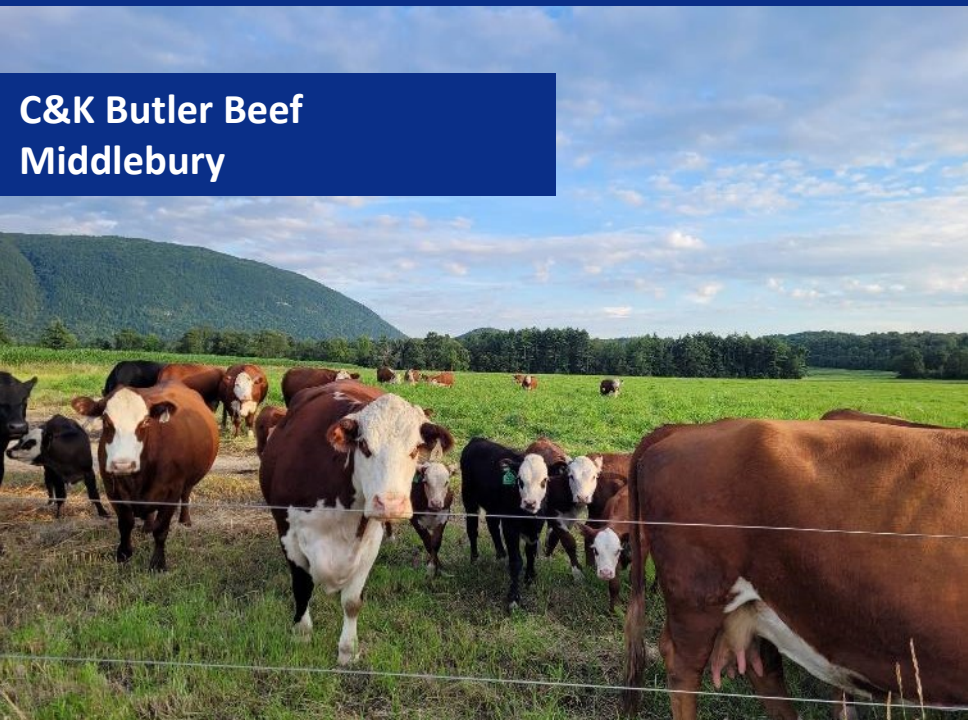
Statutory Purpose

“the dual goals of creating affordable housing for Vermonters, and conserving and protecting Vermont’s agricultural land, forestland, historic properties, important natural areas, and recreational lands of primary importance to the economic vitality and quality of life of the State.”

10 V.S.A.15 §302

Community Vitality





**Butternut Grove
Winooski**

**C&K Butler Beef
Middlebury**

FY23/24 Impact



\$69.6 million state investment
\$373 million leveraged



1,361 permanently affordable homes
(rental & homeownership)



4,426 acres farmland conserved
across 25 farms



3,451 acres conserved
natural areas, forestland & recreational lands



4 historic preservation projects



95 working lands businesses served

Housing Programs

- Multi-Family Rental Housing
- Home Ownership
- Permanent Supportive Housing
- Shelter Improvement and Expansion
- Manufactured Home Communities
- Home Accessibility Improvements
- Community Planning & Technical Assistance
- Farmworker Housing
- Recovery Residences

15,000 homes across Vermont



**Bayview Apartments
South Hero**

Conservation Programs

- Recreational Lands, Forests, and Natural Areas Conservation
- Historic Preservation
- Water Quality
- VHCB AmeriCorps
- Farmland Access
- Farm & Forest Viability Program
- Rural Economic Development Initiative (REDI)



Camp DREAM, Fletcher

§ 322. Allocation system

(a) In determining the allocation of funds available for the purposes of this chapter, the Board shall give priority to projects that combine the dual goals of creating affordable housing and conserving and protecting Vermont's agricultural land, historic properties, important natural areas or recreation lands and also shall consider, but not be limited to, the following factors:

(1) the need to maintain balance between the dual goals in allocating resources;

(2) the need for a timely response to unpredictable circumstances or special opportunities to serve the purposes of this chapter;

(3) the level of funding or other participation by private or public sources in the activity being considered for funding by the Board;

(4) what resources will be required in the future to sustain the project;

(5) the need to pursue the goals of this chapter without displacing lower income Vermonters;

(6) the long-term effect of a proposed activity and, with respect to affordable housing, the likelihood that the activity will prevent the loss of subsidized housing units and will be of perpetual duration;

(7) geographic distribution of funds.

(b) The Board's allocation system shall include a method, defined by rule, that evaluates the need for, impact, and quality of activities proposed by applicants.

Flood Resilience

Floodplain restoration: Whetstone Brook Brattleboro



Red Clover Commons



Melrose Terrace

Flood Resilience



Northfield



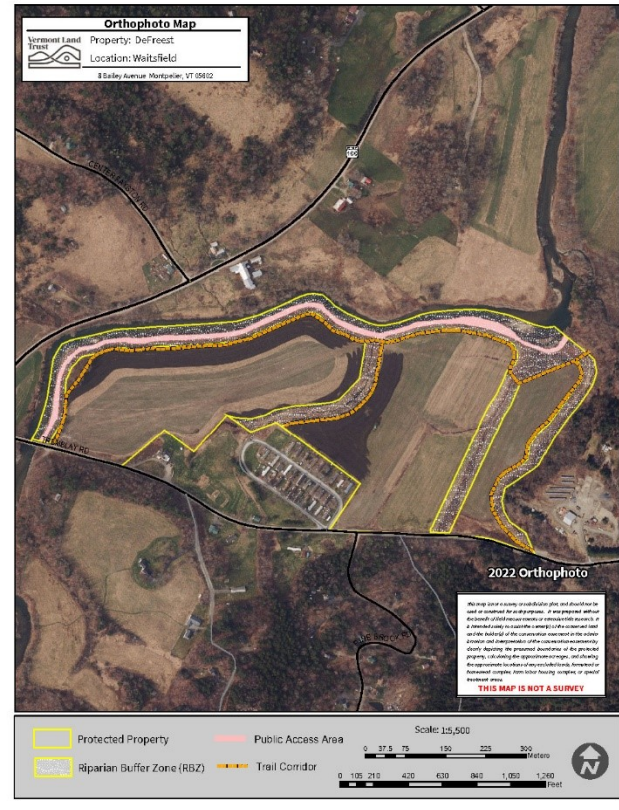
Barre

Going Upstream



**Morgan Street Wetlands,
Bennington**

Protecting Land and Water



Defreest Farm, Waitsfield

Vulnerable Populations and Climate Impacts



Tri-Park Mobile Home Park Brattleboro

Energy Efficiency & Housing



- Design standards that meet and exceed state building energy standards
 - Investments in thermal envelope
 - Electric systems
 - Incorporating solar
- Focus on energy efficient manufactured homes.

Smart Growth and Historic Preservation





Vermont
Housing &
Conservation
Board

Housing and Conservation in one project: Harrington Village, Shelburne



Wright House and Harrington Village, Shelburne



Laplatte River

Implementing Dual Goal in the Future



COTS Veterans' Housing
Winooski



Willoughby Peaks
Westmore

THANK YOU

Pollaidh Major
p.major@vhcb.org

Trey Martin
t.martin@vhcb.org

