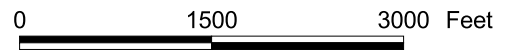
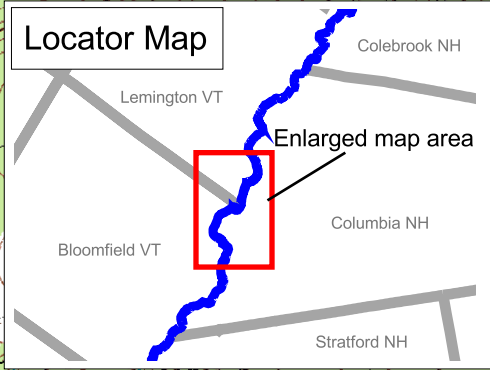
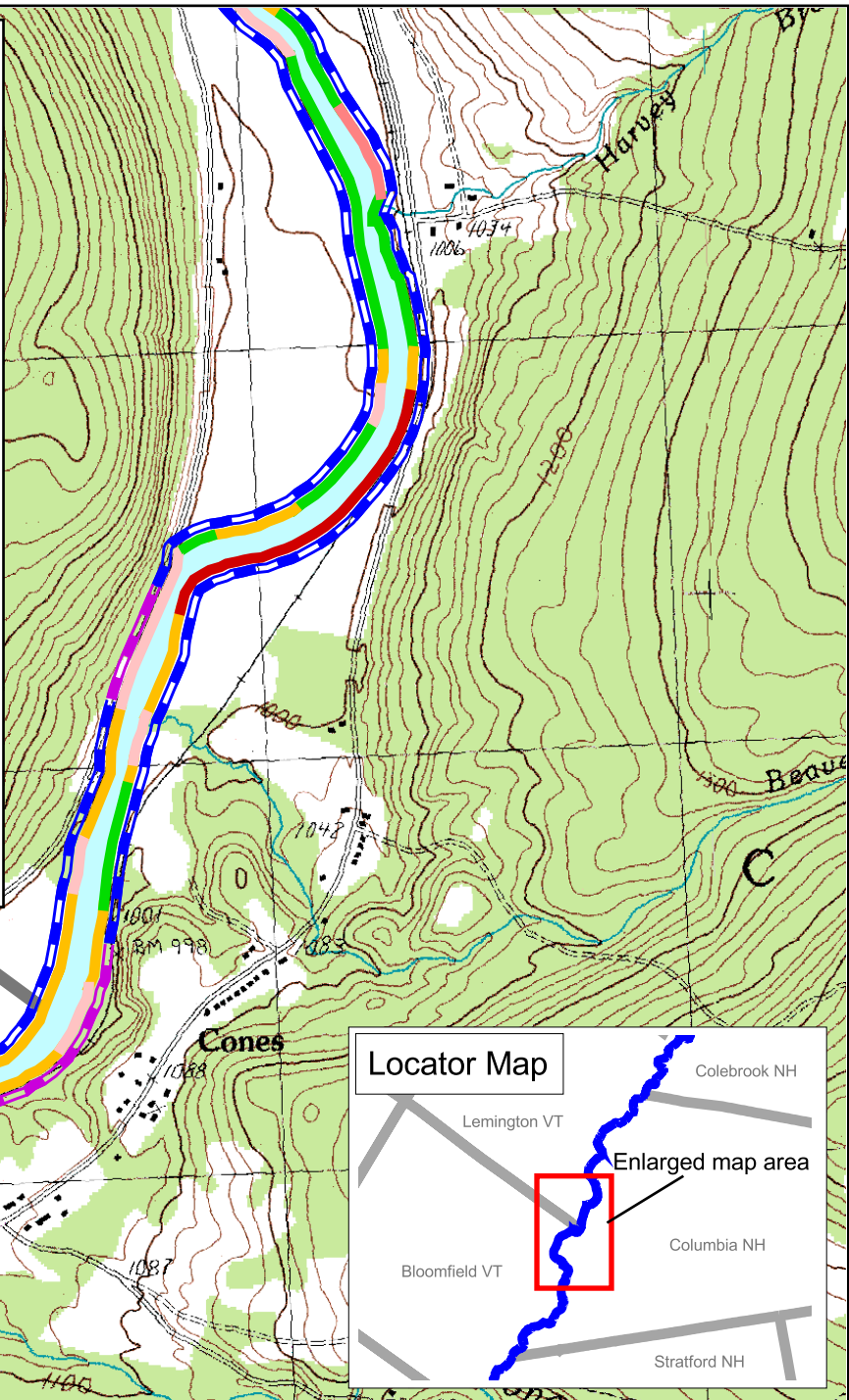


# Bank Stability and Composition on the Connecticut River in central Columbia, NH.

### MAP LEGEND

<b>Bank Stability</b>		
	Channelization	
	High eroding banks	
	Sediment inputs from tributaries	
	Undifferentiated	
	Moderate Erosion	
	Stable	
	Rip Rap	
	Old Rip Rap	
<b>Bank Composition</b>		
	Alluvial	
	Nonalluvial	
	Bedrock	



Map source: Basemap - USGS DRG quads, VCGI 2004  
 Field survey data - Field Geology Services 2004  
 Map Prepared December 2005

Map prepared by:



With support from:

